



The DNA 10K kit is intended to determine
the size profile of double stranded DNA samples
in the 1 to 10 kb range with the BIABooster-CE system

The kit is designed for the analysis of 100 samples and associated standards.
The sensitivity and the sizing range of the method allow to fully characterise genomic DNA

KIT CONTENT



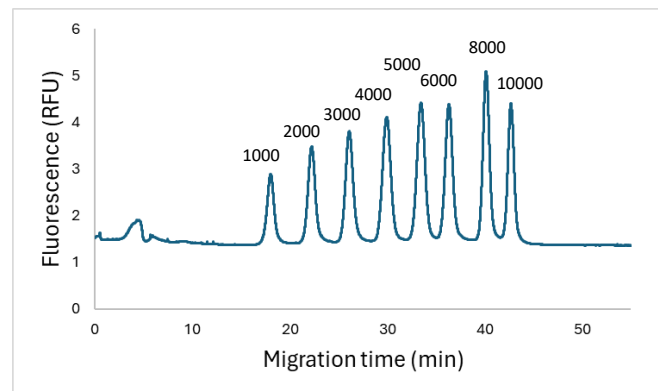
DNA 10K Kit (ref : 25-BB-DNA10K)

- Running buffer DNA 10K, 105 mL
- Capillary conditioning solution, 30 mL
- Fluorescent dye, 10 tubes of 50 μ L
- DNA10K ladder, 3 tubes of 110 μ L
130 glass inserts

LARGE DNA SEPARATION

A reference ladder is analysed every 5 samples to convert the fluorescence trace into a profile giving mass concentration according to DNA size.

Standard ladder used in the DNA10K kit
The ladder is composed of 8 bands from 1000
base pairs to 10000 base pairs.
The total concentration is 42 μ g/ μ L .



SPECIFICATIONS

Sample type	Double stranded DNA
Size range	1 – 10 kbp
LOD ⁽¹⁾	10 pg/mL at 10 kbp and 30 pg/mL at 1kbp
Sample volume	10 μ L (1 μ L injected)
Sample salt concentration	up to 15 mM
Sizing Accuracy	+/- 3% (from 1 to 6 kb) and +/- 5% (from 6 to 10 kb)
Sizing Reproducibility	< 3% CV
Quantification Accuracy	+/- 20%
Quantification Precision	< 20% CV
Dynamic range ⁽²⁾	300

(1) Limit of Detection: the concentration for a single fragment which gives a signal-to-noise ratio of 3 (peak height).
For smears, the LOD is usually 20-50 times higher.

(2) Dynamic Range: ratio between the highest and the lowest concentrations giving a quantifiable result.