

DNA 1K KIT MULTI-CHANNEL BIABooster

The DNA 1K kit is intended to determine
the size profile of double stranded DNA samples
in the 100 to 1500 bp range with the Multi-channel BIABooster system

The kit is designed for 40 samples and associated standards.
The sensitivity and the sizing range of the method
allow to fully characterise purified DNA.

KIT CONTENT

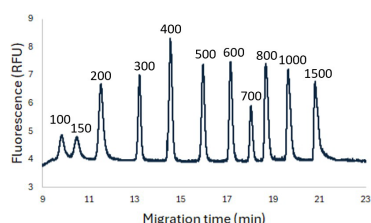


DNA 1K Kit (ref : 23-BBCNA-DNA 1K)

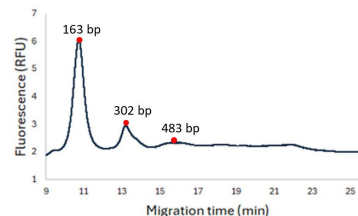
- Running buffer DNA 1K
- Capillary conditioning solution
- Capillary washing solution
- Fluorescent dye
- DNA 1K ladder

DNA SEPARATION

A reference ladder is analysed every 5 samples to convert the fluorescence profile depending on time into a mass concentration profile according to DNA size



Standard ladder used in the DNA1K kit
The ladder is composed
of 11 bands from 100 bp to 1500 bp.
The total concentration is 32 pg/μL



**Typical cfDNA size profile
of a healthy donor**

SPECIFICATIONS

| | |
|---|---|
| Sample type | Double stranded DNA |
| Size range | 0.1 – 1.5 kb |
| LOD, standard method ⁽¹⁾ | 100 pg/mL at 1 kb and 100 pg/mL at 100 bp |
| LOD, multiple injection method ⁽¹⁾ | 1 pg/mL at 1 kb et 10 pg/mL at 100 bp |
| Sample volume | 10 μL (1 μL injected) |
| Sample salt concentration | up to 15 mM |
| Sizing Accuracy | +/- 3% |
| Sizing Reproducibility | < 3% CV |
| Quantification Accuracy | +/- 20% |
| Quantification Precision | < 20% CV |
| Dynamic range ⁽²⁾ | 1000 |

(1) Limit of Detection: the concentration for a single fragment which gives a signal-to-noise ratio of 3 (peak height). For smears, the LOD is usually 20-50 times higher.

(2) Dynamic Range: ratio between the highest and the lowest concentrations giving a quantifiable result.