

# RNA 10K KIT FOR CE INSTRUMENTS

The RNA 10K kit is intended to determine the size profile of  
**RNA samples up to 13000 bases**  
with any Capillary Electrophoresis (CE) instrument

The kit is designed to analyse 100 samples and associated standards.

## KIT CONTENT

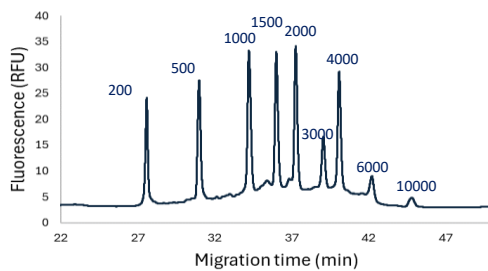


### RNA 10K Kit (ref : 16-CE-RNA10K)

- Running buffer RNA 10K, 40 mL
- Fluorescent dye, 9 tubes of 55  $\mu$ L
- RNA 10K ladder, 9 tubes of 65  $\mu$ L
- 120 glass inserts
- 1 silica capillary

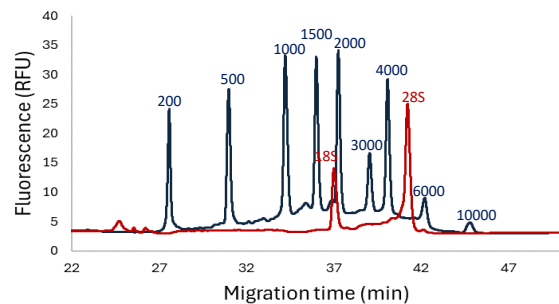
## LARGE RNA SEPARATION

A reference ladder is analysed every 5 samples to convert the fluorescence trace into a profile giving mass concentration according to RNA size, using the BIABooster Analytics or another suitable software.



### Standard ladder used in the RNA10K kit

The ladder is composed of 9 bands from 200 bases to 10000 bases.  
The total concentration is 10 ng/ $\mu$ L



### Fluorescence profile of an RNA ladder in blue and total RNA sample in red

The analysis of this sample shows 18S and 28S peaks with a 28S/18S ratio of 2.4

## SPECIFICATIONS

Sample type	RNA
Size range	Up to 13 kb
LOD <sup>(1)</sup>	60 pg/ $\mu$ L
Sample volume	25 $\mu$ L
Migration time repeatability	< 2%
Area repeatability	< 20%

(1) Limit of detection: the concentration for a single fragment which gives a signal-to-noise ratio of 3 (peak height)



---

For more information  
[www.adelis-tech.com](http://www.adelis-tech.com)  
[contact@adelis-tech.com](mailto:contact@adelis-tech.com)

---

*For Research Use Only  
Specifications subject to change without notice as part of our ongoing quality improvement programme.  
09-2024*